

## ABOUT LIGHT UP POOLE

This unique digital Light Art Festival will transform Poole's Town Centre after dark from 21 to 23 February 2019. As darkness falls, using the theme 'TIDES', Poole will tell its story as a narrative seen through the artists' eyes using projections, interactive light, and sound.

With a diverse programme, combining light art and digital installations along with plenty of interaction, Light Up Poole is designed to inspire, delight and emotionally resonate. Providing a platform for regional, national, and international artists to showcase their work, illuminate, and celebrate the town's cultural diversity, heritage, and unique location, this enlightening event will challenge your perceptions of art.

Light Up Poole is produced by Audacious CIC in partnership with leading cultural organisations.

Free and suitable for all ages.

## PRINCIPAL PARTNERS



Supported using public funding by  
**ARTS COUNCIL  
ENGLAND**



## MAJOR PARTNERS



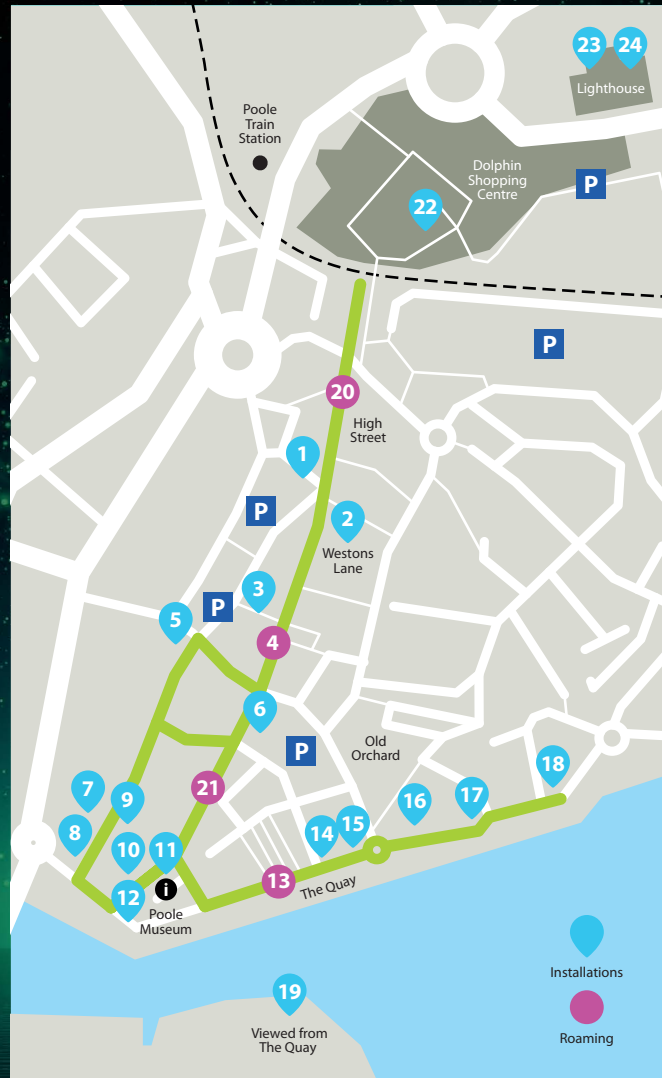
## SUPPORTED BY

Wolf Lighting, The Projection Studio, Keylight Films,  
Thistle Hotel, Quayside Emporium, Neptunes, City Cruises,  
Bournemouth and Poole College, Dolphin Shopping Centre.

For more information visit  
[www.lightuppoole.co.uk](http://www.lightuppoole.co.uk)



## MAP



## City Cruises Poole

Leaving every hour each day between 18:00 & 21:00

'Whatever your idea of fun, get it on board an award winning trip with us! Tickets £3. [www.citycruisespoole.com](http://www.citycruisespoole.com)

**POOLE QUAY**

Join the conversation **#LightUpPoole19**

[facebook.com/lightuppoole](https://facebook.com/lightuppoole)

[twitter.com/lightuppoole](https://twitter.com/lightuppoole)

[instagram.com/lightuppoole](https://instagram.com/lightuppoole)

# LIGHT UP POOLE

**DIGITAL LIGHT ART FESTIVAL**

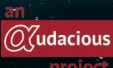
**THU 21 - SAT 23 FEB 2019**

**6pm - 9pm**

**FREE**

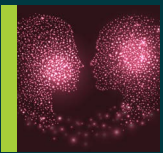


Supported using public funding by  
**ARTS COUNCIL  
ENGLAND**



For more information visit  
[www.lightuppoole.co.uk](http://www.lightuppoole.co.uk)



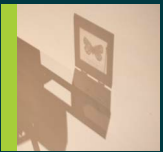


## 1 Tidal Remedies

by Audacious

Join in the dialogue, share a soup or watch the conversations unfold through a digital gallery.

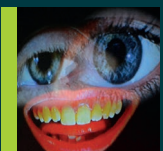
HIGH STREET OUTSIDE CAFÉ 34



## 2 AUB Architecture Container

AUB Architecture students look at a series of possible alternative ways of living and working in a conceivable, hopeful future for Poole.

HIGH STREET NEAR RUBICON

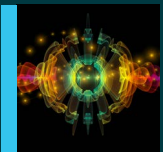


## 3 Juxtaproject

by Ashley Wilkie

Projection bombing allowing audiences to take control, be creative and design their art onto walls of Poole.

CARTER'S LANE, OFF THE HIGH STREET



## 4 Digital Ripples

by Sandie Elkins, supported by Andy McKeown and Yr.9 & Yr.10 students from Carter School.

A digital auditory 'breadcrumb' trail culminating in an evocative digital soundscape.

VARIOUS LAMP POSTS ALONG THE HIGH STREET



## 5 Ebbs and Flows

by Ashley Wilkie

Follow a journey across the oceans, exploring its hidden depths using the iconic Guildhall building with its sweeping double stairway.

THE GUILDHALL



## 6 Rhizome

by Tom & Lien Dekyvere (BE)

A digital plant is taking over Poole! Reflecting on current society that merges with nature.

ORCHARD PLAZA OUTSIDE SAINSBURY'S



## 7 Zenith

by Ross Ashton & Karen Monid from The Projection Studio

Zenith plays with the physics of light, placing the viewer into a world of refracted image in motion.

INSIDE ST JAMES' CHURCH



## 8 Horizon

by Ross Ashton & Karen Monid from the Projection Studio

A journey of humankind, discovering our place through what we see, and how that view has changed through time.

OUTSIDE ST JAMES' CHURCH



## 9 Eyrie

by Seren Birtles

An intertwining nest of plastic and light.

INSIDE ST JAMES' CHURCH COMMUNITY BUILDING



## 10 Sonic Signs

by Karen Monid

Break through the tides of time into a picture of the past.

SCAPLEN'S COURT GARDENS



## 11 Lighting Up Loggy

By Poole Museum

Poole Museum will be lighting up its famous logboat with a sea of rainbow colours.

POOLE MUSEUM

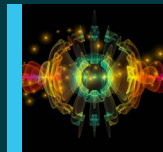


## 12 StarGate

by Andy McKeown

Come and see your face in a million drops of water.

OUTSIDE HISTORIC CENTRE, POOLE MUSEUM

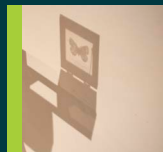


## 13 Digital Ripples

by Sandie Elkins, supported by Andy McKeown and Yr.9 & Yr.10 students from Carter School.

A digital auditory 'breadcrumb' trail culminating in an evocative digital soundscape.

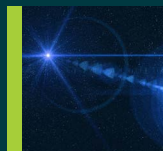
VARIOUS LAMP POSTS ON THE QUAY TO FISH SHAMBLES



## 14 AUB Architecture Container

AUB Architecture students look at a series of possible alternative ways of living and working in a conceivable, hopeful future for Poole.

THE QUAY

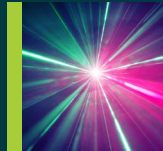


## 15 Reach for the Stars

by James Smith and Wolf Lighting

A large beacon of light reaches to the stars to create a meeting point to sit, relax and reflect.

THE FISH SHAMBLES



## 16 Experimental 1

A showcase from emerging artists

Media Production Students from Bournemouth University have created indoor light art installations to transform empty spaces.

DOLPHIN QUAYS, GROUND FLOOR EMPTY SPACES



## 17 The WeatherMACHINE

by Wild Strawberry

Getting wet without water...Bring an umbrella and come and play.

DOLPHIN QUAYS, GROUND FLOOR SHOPPING CENTRE

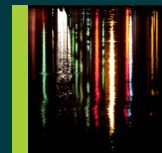


## 18 Silent Disco

By local DJ Kenny Mitchell

Come and join us for an open-air silent disco overlooking the water and show us your moves.

THE THISTLE HOTEL, STAFF CAR PARK



## 19 Harbour Glow

by James Smith, Audacious and Wolf Lighting

Taking inspiration from nature this installation will illuminate a key feature of Poole's industrial landscape and reimagine this urban space.

HARBOURSIDE, VIEW FROM THE QUAY

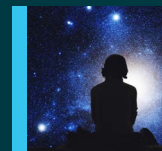


## 20 NYX

by Gijs van Bon

A Tidal light writer emits text from young voices of Poole and leads the readers through the darkness!

ROAMING ALONG THE FESTIVAL ROUTE



## 21 Celestial Beings

by Elixir Circus Arts

Ever wanted the moon on a stick? Lift your eyes to the skies to greet these lofty beings.

ROAMING ALONG THE FESTIVAL ROUTE

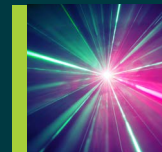


## 22 The Photon Shop

by University of Southampton

Physicists and astronomers from University of Southampton invite you to interact with science and art.

KINGLAND CRESCENT



## 23 Experimental 2

A Projection Mapping Engagement Programme

Local schools and colleges transform space through projection mapping.

LIGHTHOUSE COMMUNITY GALLERY SPACES



## 24 Young Film Makers

A Dorset-wide competition, in search of the best short film from young filmmakers.

LIGHTHOUSE COMMUNITY GALLERY SPACES

### SPECIAL EVENTS

## Light Up Poole Symposium

Friday 22nd February, 1pm

Invited representatives from the festival, Bournemouth university, local authorities, local business, technology companies and artists will be attending.

## Where Medieval Meets Modern

Saturday 23rd February, 3pm

A talk about Science – but not as you might know it with Professors Giles Gasper (History) and Brian Tanner (Physics) from Durham University.

LIGHTHOUSE, POOLE FUNCTION ROOM 1, OPEN TO THE PUBLIC

For more information visit

[www.lightuppoole.co.uk](http://www.lightuppoole.co.uk)

